

**CARDIFF COUNTY COUNCIL  
CYNGOR SIR CAERDYDD**

**CARDIFF HARBOUR AUTHORITY  
AWDURDOD HARBWR CAERDYDD**

**LOCAL NOTICE TO MARINERS – CARDIFF BAY**

**No: 14 of 2016**

**Date: 9<sup>th</sup> June 2016**

**Extreme Sailing Series – Act 3**

**No 14 of 2016 – Extreme Sailing Series - Act 3**

Act 3 of the Extreme Sailing Series takes place in Cardiff Bay between Tuesday 21<sup>st</sup> June and Sunday 26<sup>th</sup> June.

The race and training area exclusion zone (see attached plan) will be marshalled by Cardiff Harbour Authority vessels during the following dates and times:

Tuesday 21 <sup>st</sup> June	1300 hrs – 1430 hrs	GC32 Practice
Wednesday 22 <sup>nd</sup> June	1000 hrs – 1645 hrs	GC32 Practice
Thursday 23 <sup>rd</sup> June	1300 hrs – 1730 hrs	Media / Press Day GC32 Racing
Friday 24 <sup>th</sup> June	1000 hrs – 1730 hrs	Corporate racing GC32 Racing
Saturday 25 <sup>th</sup> June	1000 hrs – 1800 hrs	Corporate racing GC32 Racing
Sunday 26 <sup>th</sup> June	1030 hrs – 1715 hrs	Corporate racing GC32 Racing

The GC32's will remain afloat from Tuesday 21<sup>st</sup> June to Monday 27<sup>th</sup> June. To accommodate the GC32's, the main Pay and Display pontoons will be closed between 0900 hrs Tuesday 21<sup>st</sup> June to 0900 hrs Monday 27<sup>th</sup> June.

**Mariners are advised that there will be limited mooring in Graving Dock No 3. Mooring will be subject to the terms and conditions displayed. There will be NO access to or from the Inner harbour (Graving Dock) during the exclusion zone times.**

Further information regarding the event can be found at [www.cardiff-festival.com](http://www.cardiff-festival.com)

**Mariners are reminded that CCTV is in operation at the Barrage for operational and health and safety reasons. All CCTV images and VHF transmissions are recorded.**

**Notices Cancelled:**

No 09 of 2016 – Extension of Cardiff Barrage Lock 1 Closure for Preventative Maintenance

**Notices Still Current:**

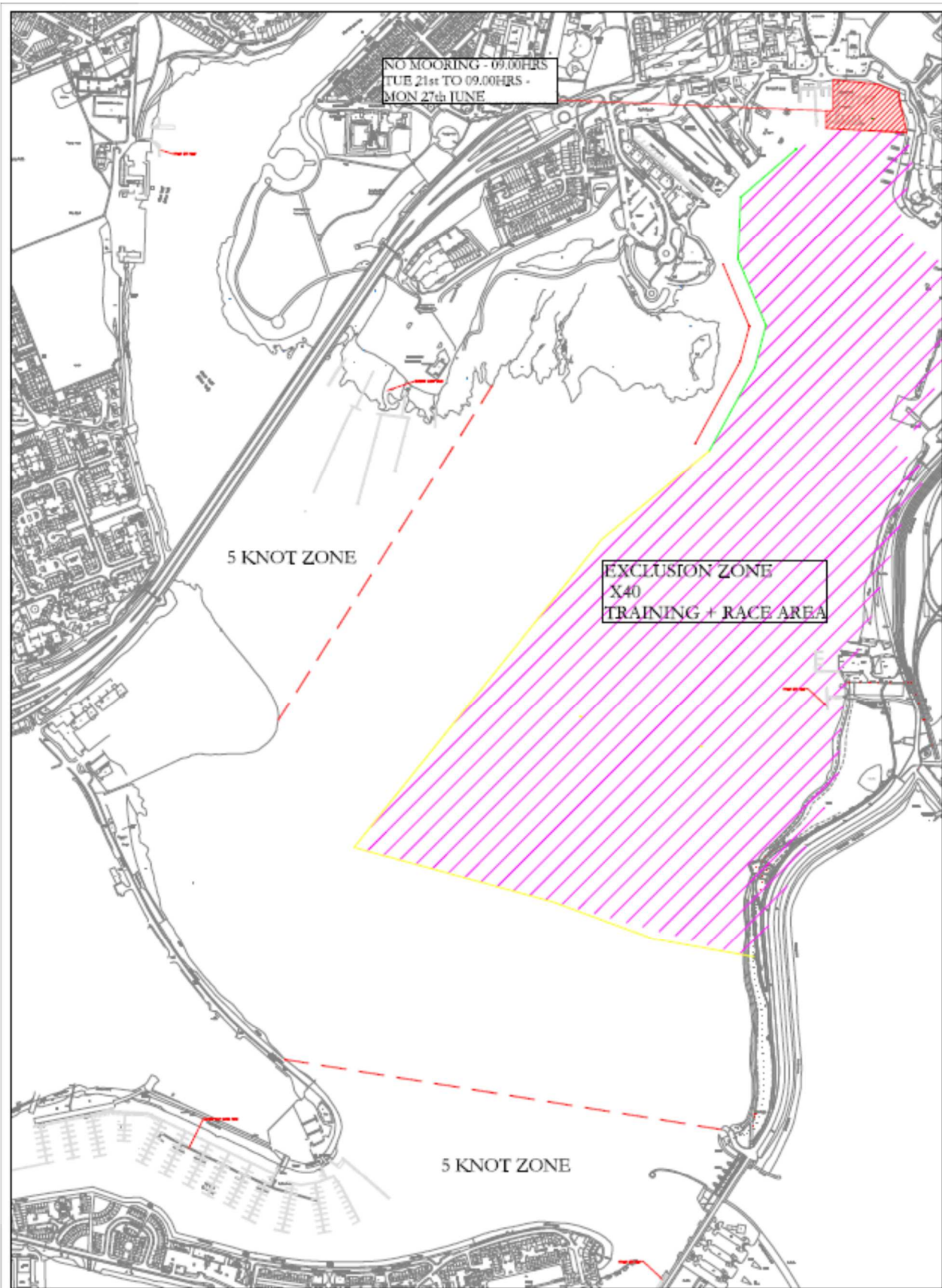
No 02 of 2015– Arriving and departing Cardiff Harbour – Navigation in the Wrach Channel,


No 10 of 2015 - Re-instatement of Cardiff Barrage Approach Channel Sector Light Navigation Aid 7 Dir LFI.WRG.5s - 298 degrees

For notices still current prior to 2015 please see: [www.cardiffharbour.com](http://www.cardiffharbour.com)

**Cardiff County Council  
Cardiff Harbour Authority  
Queen Alexandra House  
Cargo Road  
Cardiff  
CF10 4LY**

**Harbour Master, Cardiff Bay  
9<sup>th</sup> June 2016  
Cardiff Harbour Authority Office  
Telephone No: 029 2087 7900  
Barrage Control Tel No: 029 2070 0234  
VHF: Channel 18**



 <p><b>DIRECTOR OF CITY OPERATIONS</b> Mr &amp; GREGORY</p>	<p>Group <b>CARDIFF HARBOUR AUTHORITY</b></p>	<p>Project <b>Extreme Sailing</b></p>			<p>Drawing title <b>N.T.M.</b></p>	
	<p>Client <b>CARDIFF COUNTY COUNCIL</b></p>	<p>Drawn by <b>CV</b></p>	<p>Checked by <b>NTS</b></p>	<p>Date <b>08.06.16</b></p>	<p>Project No. <b>2016</b></p>	<p>Drawing No.</p>